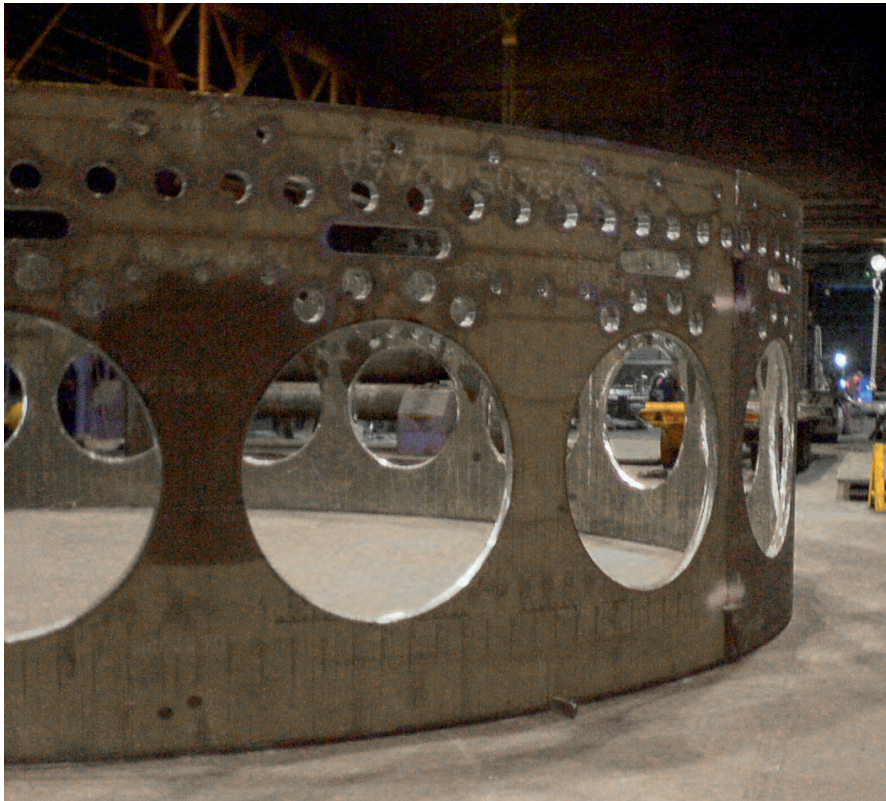


## DEFORM FORMS PLATES FOR BLAST FURNACES



Assembled shell block.

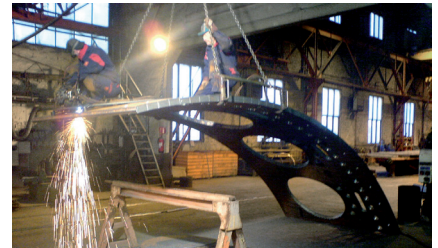
**Uddcomb Engineering has often been the turnkey contractor for SSAB's blast furnaces. On a subcontract basis, Deform undertakes all prefabrication of the blast furnace bodies.**

On all occasions since 1994, Deform has been responsible for cutting, forming, hole making, test assembly and marking of the segments for blast furnace bodies. Each blast furnace body comprises shell and cone segments. The shape and position-correctness tolerances for these are extremely tight.

So far, the largest body diameter has

been 14 metres. Wall thicknesses have been from 35 to 90 mm. The latest blast furnace had a diameter of 10.5 metres and was 25 metres high. Thicknesses ranged from 30 to 60 mm. The body comprised 48 segments with around 3,000 holes. We can proudly state that the fit was excellent – each segment was checked individually and each block was inspected during test assembly. The most recently delivered block had a circumferential deviation of 7 mm. This was well below the tolerance of  $\pm 20$  mm.

We take great pride in supplying complex, complete products that are subject to extreme quality requirements!



Hole making.



Shell segment – 60 mm thick.



One of many blast furnaces delivered by Deform.