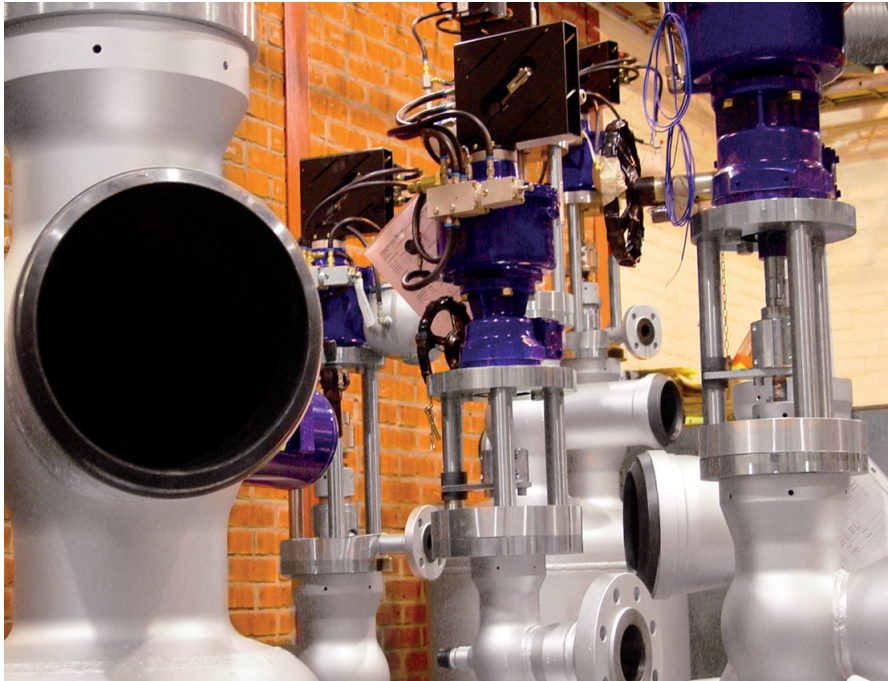


> SINGLE-PIECE PRESSURE HEADS FOR CCI



CCI is a world leader in, amongst other things, steam conditioning valves. Deform regularly supplies the company with single-piece pressure heads and crowns.

CCI is an American company with sales offices worldwide and development/production facilities in, for example, Sweden, Austria, Korea, Mexico, Slovakia, Switzerland and the Czech Republic. Deform's customer is CCI in Säffle. The short distance between our companies means that contacts, meetings and the flow of goods all run extremely smoothly.

To be able to rapidly cut out circular blanks in the sizes required by the products, Deform keeps certain selected steel grades and thicknesses in stock. Because CCI always requires specially tailored solutions, production is entirely steered by customer orders. Thus, the challenge for Deform is to be flexible and cost-efficient in a manufacturing process where great precision, high quality, short lead times and one-off production are the demands.

Kent Rapp, the CCI account manager.

Assembled valves ready for delivery at CCI.

